

# Matson<sup>®</sup> LOGISTICS



## 2025 COMPANY PROFILE



# Contents

<b>Overview</b>	<b>4</b>
Introduction . . . . .	4
Matson’s Business Units . . . . .	5
Mission, Vision, Values . . . . .	6
History . . . . .	7
Sustainability and Environmental Stewardship . . . . .	9
Recognition and Awards . . . . .	10
Matson Giving . . . . .	11
<b>Transportation</b>	<b>12</b>
Intermodal Services . . . . .	12
Highway Services . . . . .	13
Oversize, Heavy Haul, and Project Shipments . . . . .	14
Mexico Service: Cross-Border and Intra-Mexico . . . . .	15
<b>Warehousing and Distribution</b>	<b>16</b>
Oakland Facilities . . . . .	17
Savannah Facilities . . . . .	17
Value-Added Services . . . . .	18
Transload and Cross-docking . . . . .	18
Foreign Trade Zone . . . . .	18
<b>International Supply Chain</b>	<b>19</b>
Origin Services . . . . .	19
Transportation Services . . . . .	19
Destination Services . . . . .	19
Documentation Management . . . . .	19
<b>Alaska Logistics</b>	<b>20</b>
Span Alaska Coverage and Services . . . . .	20
<b>Industries and Customers Served</b>	<b>21</b>
<b>Geographic Coverage</b>	<b>21</b>

## Introduction

**Matson Logistics** is a U.S.-based transportation and logistics provider with services and solutions throughout North America and across Asia. Launched in 1987 to provide intermodal marketing services, it has since grown its portfolio to include transportation brokerage (highway and rail), warehousing and distribution, and international supply chain services.

It also offers customized services ranging from origin factory management in Asia, transloading and cross-dock options, value-added packaging and product preparation, and operates the only Foreign Trade Zone in Oakland, California.

It is a part of **Matson, Inc.**, a U.S.-based, publicly traded company providing ocean transportation services throughout the Pacific. Founded in 1882 by Captain William Matson, it is one of the oldest continuously operated shipping lines in the world. A majority of Matson's ships are U.S.-built, U.S.-crewed, and U.S.-operated, which provide advantages in the integrated trade lanes of its operations spanning the Pacific. The company is listed on the NYSE under the ticker symbol "MATX."



Company founder Captain William Matson



The Lurline — a combination container/roll-on, roll-off ("con-ro") vessel — entered service in 2020

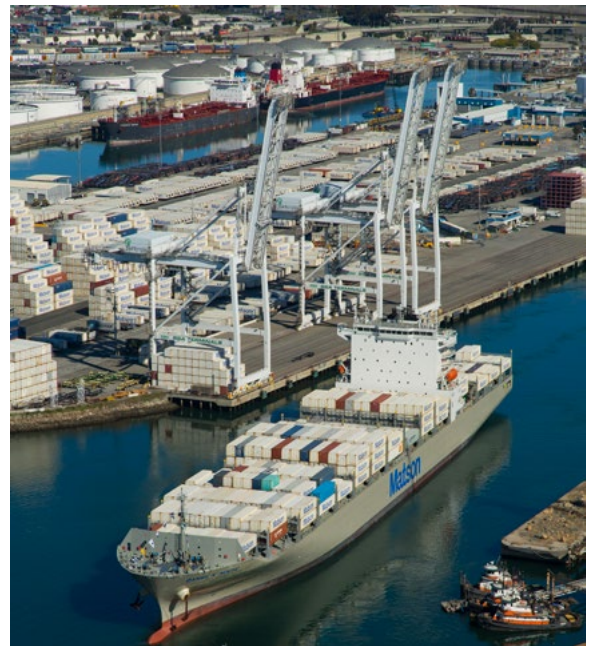
## Matson's major business units:

### Matson

#### Matson Navigation Company

Founded 1882

- Ocean transportation services connecting the U.S. Mainland to Hawaii, Alaska, Guam, Japan, Micronesia, and the South Pacific
- Premium, expedited container service from China to Los Angeles/Long Beach
- Diversified fleet features purpose-built containerships, combination container and roll-on, roll-off vessels, and specially designed container barges
- Through a joint venture (SSA Terminals), provides terminal and stevedoring services to various carriers at seven terminal facilities on the U.S. West Coast, including three facilities dedicated for Matson's use



### Matson LOGISTICS

#### Matson Logistics

Established 1987

- Multimodal transportation brokerage of both domestic and internationally sourced freight
- Long-haul and regional highway FTL/LTL transportation
- Intermodal rail services on all Class I railroads with a dedicated container fleet
- Warehousing and distribution on both coasts
- International supply chain services from more than 20 locations throughout Asia, South Asia, the Middle East, Europe, and Africa

### Matson Terminals

#### Matson Terminals

Established 1921

- Stevedoring, container maintenance, and other terminal services supporting Matson's ocean shipping operations in Hawaii

## Mission

To move freight better than anyone.

## Vision

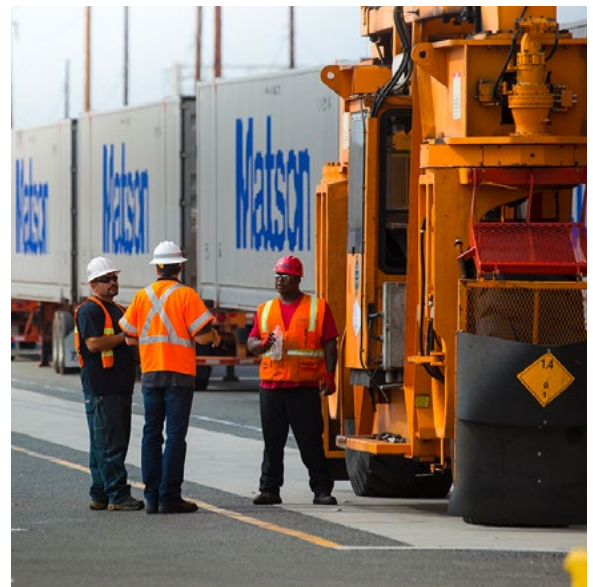
To create value for our shareholders by:

- Being our customers' first choice,
- Being a great place to work,
- Improving the communities in which we work and live,
- Being an environmental leader in our industry, and
- Leveraging our core strengths to drive growth and increase profitability.

## Values

Matson is guided by the following principles in serving our shareholders, customers, employees and communities:

- **Integrity:** We conduct all we do on behalf of Matson with respect, candor and honesty.
- **Accountability:** We strive to fulfill commitments 100% of the time, and when we fall short, we acknowledge, recover and learn from our mistakes.
- **Teamwork:** We leverage our resources and diverse talent to achieve superior results.
- **Achievement:** We promote individual and organizational success.
- **Innovation:** We value creativity, initiative and agility.
- **Safety:** We make workplace safety our highest priority both on land and at sea.
- **Environment:** We are a leader in environmental stewardship and consider the environment in all we do.
- **Community:** We contribute positively to the communities in which we work and live.
- **Rich History:** We have a long, proud history that we honor in all we do.



## History

Matson's start as a transportation pioneer began in 1882 when Captain William Matson sailed his three-masted schooner *Emma Claudina* from San Francisco to Hilo, Hawaii, carrying 300 tons of food, plantation supplies, and general merchandise.

Over the next 140+ years, Matson has been involved in such diversified interests as oil exploration, hotels and tourism, military service during two world wars and even briefly, the airline business. Matson is also fondly remembered by many for its luxury cruises in the Pacific and for its role in the development of Hawaii tourism.

Matson's primary interest throughout, however, has been to provide premier freight transportation, serving as a vital lifeline to the economies of Hawaii, Alaska, Guam, and more than 25 islands and island nations in the Pacific. Matson also operates the first- and second-fastest weekly ocean container service from Shanghai to Southern California.

Matson Logistics began 1987 as a "start-up" within Matson, and quickly grew by providing intermodal marketing services — arranging rail and truck transportation throughout North America — for shippers and ocean carriers of all sizes. Leveraging that experience, it extended services to other ocean liner companies, and developed domestic transportation capabilities.

In the early 2000s, with an influx of new talent, it rapidly expanded its domestic transportation business while continuing to serve ocean carriers. As services were added, the company changed its name to Matson Integrated Logistics in 2003. In 2008, Matson Logistics again expanded its scope to include warehousing and distribution on both coasts, and managing a Foreign Trade Zone serving Northern California. In 2011, the company rebranded to Matson Logistics, to better describe its multimodal and 3PL services.

In 2013, International Supply Chain Services were added to the Matson Logistics portfolio, providing shippers with tools, visibility, and expertise to manage complex global supply chains. In 2016, Matson Logistics acquired Span Alaska, the leading freight consolidator and forwarder serving the state of Alaska.

[Read more](#) about Matson's 140+ years of leadership and innovation. [View a video on Matson's history](#)

[View Matson Logistics' Corporate Video](#)



# Matson and Matson Logistics: A Pioneering History

**1882** – Captain William Matson sailed his three-masted schooner Emma Claudina from San Francisco to Hilo, Hawaii, carrying 300 tons of food, plantation supplies and general merchandise.

**1887** – First regular ocean service between the Pacific Coast and Hawaii.

**1896** – *Roderick Dhu* is the first vessel in the Pacific equipped with cold storage and electric lights.

**1917** – When Captain Matson died in 1917, the Matson fleet comprised 14 of the largest, fastest, and most modern ships in the Pacific passenger-freight service.

**1921** – Matson Terminals subsidiary forms to provide stevedoring and shoreside services.

**1930** – Start of the “white ships” era — world-famous luxury liners serving Hawaii and the South Pacific.

**1940-1945** – Matson’s 39 passenger liners and freighters called to military service.

**1958** – *S.S. Hawaiian Merchant* departs San Francisco Bay carrying 20 24-foot containers on deck. The historic voyage marks the beginning of an ambitious containerization program.

**1960** – The *Hawaiian Citizen* enters service with a capacity for 436 24-foot containers, the first all-container carrier in the Pacific.

**1970** – With the rapid growth of containerization, Matson makes the decision to concentrate on its Pacific Coast-Hawaii freight service. It sells its passenger vessels and suspends other Pacific services.

**1987** – Matson Intermodal System, precursor to Matson Logistics, launches to provide specialized rail and highway services.



1930



1960



1987



2016



2020

**1993** – The first container vessel operator to adopt a zero solid waste policy at sea.

**1996** – Acquires six vessels and launches weekly service to Guam.

**2006** – Start of the CLX service from China to the U.S. Offers the industry’s fastest transit time (10 days) from Shanghai to Los Angeles/Long Beach.

**2011** – Logistics and intermodal services rebrand under the name Matson Logistics.

**2012** – Matson separates from its parent company to form Matson Inc., with shares trading on the NYSE under ticker MATX.

**2013** – Re-enters South Pacific trade with services throughout Australasia, Melanesia, and Polynesia.

**2015** – Acquires the Alaska operations of Horizon Lines, including seven vessels and service to the ports of Anchorage, Kodiak, and Dutch Harbor.

**2016** – Matson Logistics acquires Span Alaska, the largest forwarder/LTL carrier serving the state.

**2020** – Completes delivery of four new vessels, the Daniel K. Inouye, Kaimana Hila, Lurline, and Matsonia. They are the largest, most technologically advanced, and environmentally friendly vessels serving Hawaii.

**2022** – Matson announces the investment of almost \$1 billion to build three Aloha Class “LNG ready” containerships.

**2024** – Matson Logistics expands offices in Mexico to support rapid growth of cross-border and intra-Mexico services. Expedited stacktrain services were inaugurated 20 years ago.

## Sustainability and Environmental Stewardship

Matson's core values include being an industry leader in environmental stewardship and contributing positively to the communities in which we live and work. These values are fundamental to achieving our Mission – to move freight better than anyone – and to delivering long-term value to all of our stakeholders.

We have built a reputation for our deep commitment to environmental stewardship, being a trusted and reliable employer and community partner, and operating our business with integrity.

In keeping with that tradition, we are working collaboratively in our industry to promote positive change and mitigate environmental impacts associated with our business operations. And we are investing in sustainability across our Company – from the design of our new, state-of-the-art vessels to the modernization of our landside facilities to the continuing education of our people.



## Greenhouse Gas Emissions, Climate Change and Air Quality

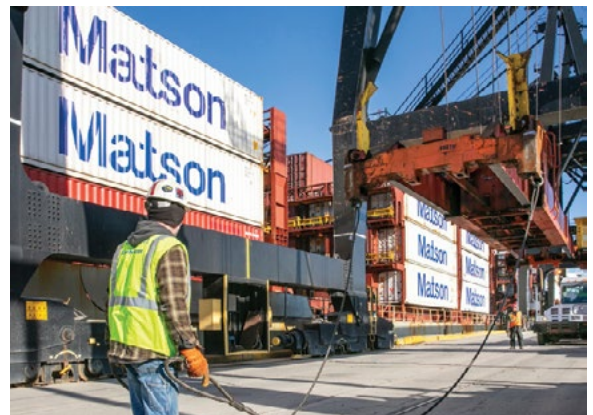
- Reduced Scope 1 emissions by 12 percent since 2016
- 13 percent reduction in SOx emissions since 2020
- Added four new, state-of-the-art U.S.-built ships with several environmental features that help reduce GHG emissions
- Achieved compliance with International Maritime Organization (IMO) 2020 emissions standards for all vessels
- LEED Silver corporate offices and LEED-certified warehouse complex in Savannah, Georgia



## Protecting Marine Ecosystems

- Discharged zero solid waste at sea
- Implemented ballast water management plans on all ships to prevent the transfer of invasive species
- Joined voluntary speed reduction programs to reduce air emissions and marine animal strikes
- Supported collection and recycling of 170 tons of ocean plastics from the Pacific Ocean through partnership with Ocean Voyages Institute

[Read more](#) about our Sustainability Practices and Initiatives



We are proud to be recognized for our service excellence and environmental stewardship.

### Industry Leadership and Quality

- 2024 Quest for Quality (*Logistics Management Magazine*) Ranked #1 Intermodal Service Provider
- 2023–2024 America’s Best Mid-Size Employers – *Forbes Magazine*
- 2023 Top 40 Brokerage Firm – *Transport Topics*
- 2022 Quest for Quality (*Logistics Management Magazine*) Ranked in Top 5 of Intermodal Service Providers
- 2021 Supply Chain Pro to Know – *Supply & Demand Chain Executive Magazine*
- 2020 Quest for Quality (*Logistics Management Magazine*) Ranked #1 Intermodal Service Provider
- 2020 Quest for Quality (*Logistics Management Magazine*) Ranked #5 out of 55 3PL Transportation Providers
- 2014-2025 Top100 3PL Providers – *Inbound Logistics*
- 2018-2024 Top 100 3PL and Cold Storage Providers – *Food Logistics Magazine*
- Rockstar of the Supply Chain – *Food Logistics Magazine*
- Performance Certified – Transportation Intermediaries Association (multi-year)
- *Fortune Magazine* Top 1000 Companies (Matson)



We are honored to be ranked as a top Intermodal Service Provider and 3PL by our customers in the Annual Quest for Quality Awards. This award, presented by Logistics Management Magazine, is one of the highest accolades in the industry. Rankings are based solely on votes by shippers, using strict criteria and a rigorous vetting process. Matson Logistics and Matson have been recognized with 18 Gold Awards since 2013.

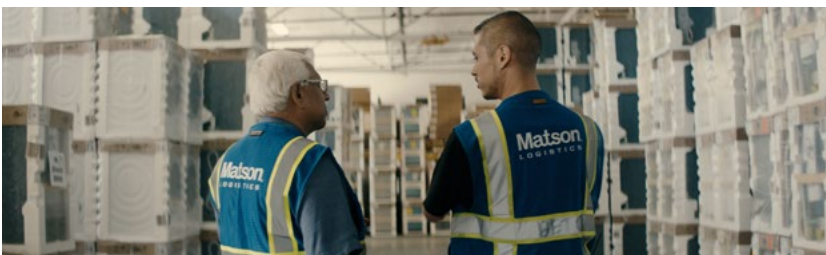


### Environmental Initiatives and Stewardship

- 2021-2023 Green Supply Chain Partner – *Inbound Logistics Magazine*
- 2020 Green Supply Chain Award – *Supply & Demand Chain Executive Magazine*
- 2020 Marine Environment Protection Award for Innovation – North American Marine Environment Protection Association (Matson)
- EPA SmartWay® Certified – since 2008



Matson Logistics has been a member of the U.S. Environmental Protection Agency’s (EPA) SmartWay® Transportation Partnership for more than 15 years. SmartWay is a collaboration between the EPA and freight transportation companies to increase energy efficiency while significantly reducing GHGs and air pollution.



## Matson Giving

Supporting the communities in which we do business is a long-standing part of Matson's corporate culture. Employees throughout our company take pride in participating in activities and events that help benefit their schools, hospitals, parks, social service agencies, sport teams, neighbors, colleagues and customers.

In 2023, our charitable arm, Matson Giving, provided \$8.7 million in cash and in-kind services to bolster the work of 738 non-profits across Hawaii, Alaska, Micronesia, the South Pacific, and the U.S. mainland. This includes Matson Giving's monetary match to the numerous volunteer hours Matson employees provided to causes important to them.

In addition, Matson has committed \$10 million in cash and in-kind shipping services to the foodbank networks supporting families in need in Hawaii, Alaska, and Guam. Matson has committed \$5 million in shipping value to assist food banks and meal programs in non-contiguous locations across our network, including in Guam, Hawaii and Alaska, for three years through the end of 2026.

[Read more](#) about our philanthropic donations and community service programs



# Transportation

## Intermodal Services

From first mile to last mile, Matson Logistics creates cost-effective and transit-competitive intermodal solutions for shippers of all sizes.

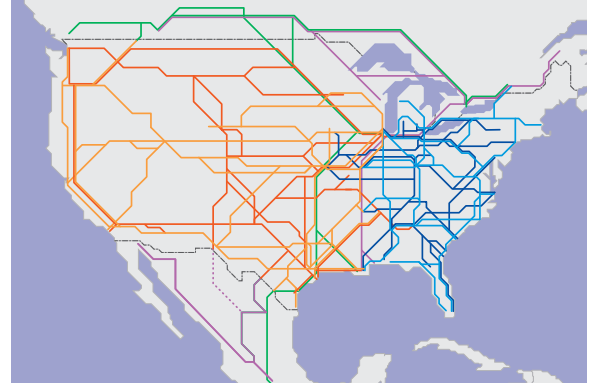
Tier One agreements with all North American Class I railroads and other service providers offers committed capacity, competitive rates, and comprehensive route coverage.

Highlights:

- Premium intermodal services designed to compete with single-driver highway transit
- Dedicated capacity with private fleet of Matson 53', 40' and 20' containers with access to more than 100,000 pooled units
- Contracts with a select group of drayage providers to ensure on-time pickup and delivery
- Pricing options include long-term, short-term, spot, project, and customized rates
- Matson Logistics technology automatically reports current shipment location and status via EDI, ASN, e-mail, fax, or secure Internet access
- Service to, from, and intra-Mexico and Canada

Read More

<https://www.matson.com/logistics/transportation/intermodal.html>





## Highway Services

Matson Logistics offers longhaul and regional highway transportation throughout North America. We are ranked in the Top 40 Freight Brokerage Firms by *Transport Topics*.

Highlights:

- “Any size, any distance” Over the Road (OTR) transportation, including LTL, FTL, expedited, and over-dimension freight
- More than 120,000 OTR shipments delivered per year
- Contracts with more than 100,000+ carriers (both highway and drayage) to ensure capacity, even in peak season. All vetted through an internal monitoring team to ensure we use high-quality, safe, and reliable carriers
- \$100,000 surety bond on each shipment
- Proprietary technology to match freight with available capacity helps shippers manage their core lanes while quickly responding to surges, unexpected demand, and “one-off” shipments

Read More

<https://www.matson.com/logistics/transportation/index.html>



## Oversize, Heavy Haul, and Project Shipments

Matson Logistics regularly handles over-dimensional and breakbulk cargoes, managing the flow of time-critical material, supplies, and equipment direct to destination points all over North America and the Pacific Rim.

Highlights:

- Flatbeds, Step Decks, Double-Drops, RGNs, Side Curtain, and Lowboys
- RoRo services and special handling for rolling stock, vehicles, and watercraft
- In-House Project Team to create load plans, secure equipment, and ensure JIT delivery
- Custom route planning with state permits and escorts as needed
- Carefully selected specialized carriers with global, national, regional, and local coverage



## Mexico Service: Cross-Border and Intra-Mexico

As one of the largest intermodal service providers, Matson Logistics works with all Class 1 North American railroads to design and execute efficient and flexible programs for a broad base of shippers. Our expanded intermodal service connects virtually any point in North America, including Mexico and Canada.

- Partnerships with UP, NS, BNSF, CPKC, FXE, CSX, and CN providing direct service into, out of, and within Mexico
- Shipments do not stop at the border for customs clearance; instead, they clear at interior Mexico origins and destinations
- No transload or rehandling required at the border; products remain safe and secure in the intermodal container
- Domestic intra-Mexico coverage within Mexico, along the Pacific, Central/Bajío, and Mexico City Metro regions with extended reach into Southern California and Arizona
- Domestic routes only require carte porte information for shipping
- 24/7 shipment visibility with customized track and trace reports and automated alerts



# Warehousing and Distribution

Company-owned and operated warehouse distribution centers on the East and West Coasts and a network of partner providers help us execute highly customized solutions for a wide range of businesses, including some of the world's most widely recognized brands.

Matson Logistics offers contract warehouse space, public warehouse services, or short-term seasonal "pop-up" capacity. We combine space and storage options with value-added product packaging and retail preparation, and several distribution modes including truck, rail, and air. We also specialize in outbound DtC and e-commerce small package and door delivery.

## Specialized Services for these Industries:

- High-value domestic, import, and export goods
- Wines and spirits
- Food and beverages
- Organic food products
- High tech
- Retail and apparel
- Consumer packaged goods

Read More

<https://www.matson.com/logistics/warehouse/index.html>



## Oakland Logistics Center

Located within 10 miles of the 3rd-largest port complex and 2nd-largest cargo airport on the West Coast.

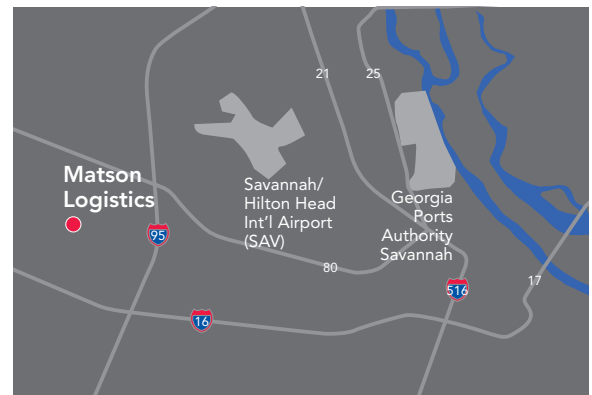
- Full Service Warehousing and Distribution
- 600k sq. ft. of high-quality space centrally located in the San Francisco Bay Area
- Exclusive operator of the Oakland Foreign Trade Zone
- FDA Registered, USDA Organic Food Certified
- 100% RF Wireless Network (Building and Yard)
- Heavyweight 40' container service up to 58,000 lbs.
- Temperature controlled 55–60-degrees Fahrenheit space
- Value-Added Packaging Services
- CA ABC Type 14 license for beer, wine, and spirits



## Savannah Logistics Center

Located within minutes from the 2nd-largest port complex on the East Coast.

- 1.1 million sq. ft. of both Dedicated Contract Warehouse and Traditional Multi-Client Warehouse Operations
- 32' Clear
- 189 Dock Doors
- Secured Trailer Yard — 700 spaces and 24/7 security and guard service
- Heavy Weight Container (Approved)
- Food Grade facility
- CTPAT compliant
- ESFR Sprinkler System
- Tier 1 and Tier 2 WMS
- 100% RF Wireless Network (Warehouse and Yard)
- Green Building (LEED Certified)





## Value-Added Services

- Custom design service
- Club store packs
- Custom pallet displays
- Tray cutting
- Pouch filling and sealing
- Ink jetting
- Gift boxes and packaging
- Kitting and bundling
- Barcode labeling
- Price ticketing
- Rework and repackaging



## Transload and Cross-Docking

At our bonded logistics centers located just 10 minutes from the ports of Oakland, CA and Savannah, GA, we transfer products from ocean containers into 53-foot domestic trailers or intermodal containers. This saves the cost of one truck or rail move for every three containers imported — and avoids equipment detention charges.



## Foreign Trade Zones – Northern California and Savannah, GA

Matson Logistics' FTZ services enable customers with internationally sourced or distributed products to defer or eliminate Customs duties, lower inventory costs, improve cash flow, and compete more strategically in local and global markets.

# International Supply Chain Services

Matson Logistics International Supply Chain Services helps importers streamline their overseas sourcing, from PO inception through factory production to final retail delivery. We operate in 23 locations in Asia, Southeast Asia, the Indian Subcontinent, Africa, and Europe.

## Origin Services

**Integrated end-to-end suite of services, starting with product order creation and ending with final delivery.**

- Purchase Order and Supplier Management
- Ship Window Compliance
- Track and report partial, over, and under shipment quantities
- Shipment Consolidation to SKU-level piece count
- Value-added options include sort, barcode, label/pricetag, scan, palletize, shrinkwrap
- Special handling for apparel and garment-on-hanger (GOH) shipments

## Transportation Services

**NVOCC division sources and books cargo transportation throughout Asia and to virtually any destination in the United States.**

- Carrier bookings for LCL, FCL, airfreight, drayage, and final delivery
- Air/Sea and Sea/Air LCL services to expedite shipments from South and Southeast Asia
- Expedited LCL Service — China to Los Angeles/Long Beach in 10 days using Matson's CLX vessel services; next-day availability
- Carrier performance and on-time reliability measurements and reporting
- Freight audits to ensure accurate rating and billing



## Destination Services

**Inbound customer service team manages destination door delivery to commercial addresses throughout the U.S.**

- Oversee customs brokerage to classify and clear shipments
- Domestic distribution using a comprehensive network of truckload, less-than-truckload, intermodal, and expedited providers
- Company-owned warehousing and distribution centers on both coasts and a Foreign Trade Zone serving Northern California

## Document Management

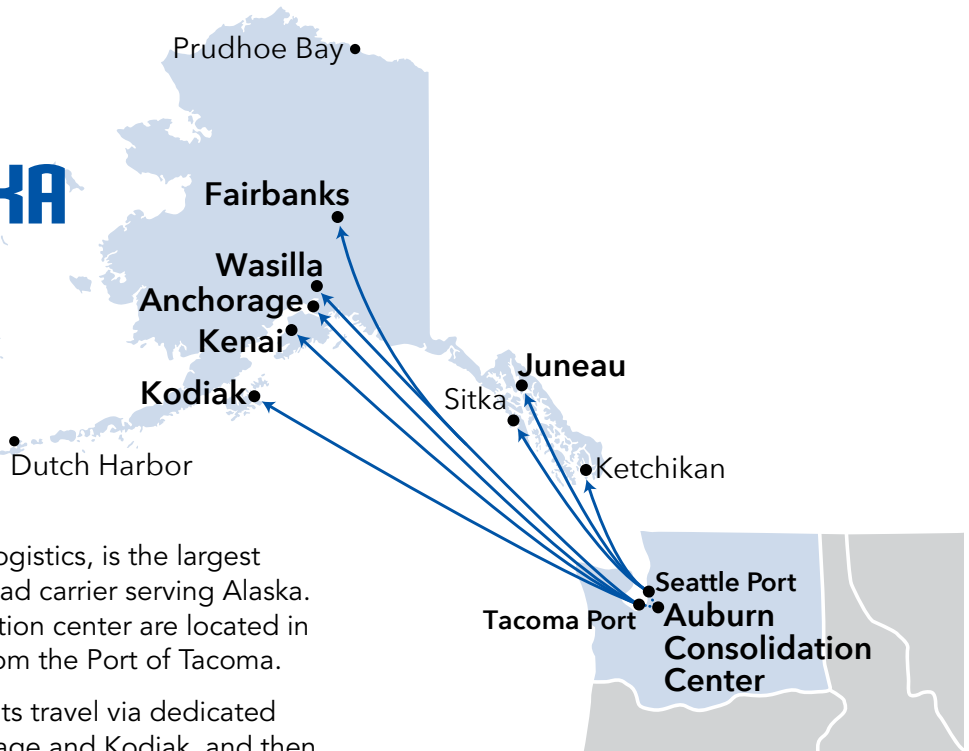
**Cloud-based systems ensure critical information can be processed and shared with all parties quickly, accurately, and securely.**

- Commercial invoices, packing lists, and purchase orders
- Bills of Lading, cargo receipts
- ASN, EDI, and ISF 10+2 filing

Read More

[https://www.matson.com/logistics/supply\\_chain/index.html](https://www.matson.com/logistics/supply_chain/index.html)





Span Alaska, a subsidiary of Matson Logistics, is the largest freight forwarder and less-than-truckload carrier serving Alaska. Its headquarters and freight consolidation center are located in Auburn, Washington, minutes away from the Port of Tacoma.

Once loaded into containers, shipments travel via dedicated ocean service from Tacoma to Anchorage and Kodiak, and then move directly to one of Span Alaska's six regional service centers.

Customers can pick up their shipments or arrange for door delivery to any Alaska address. Span Alaska also provides transportation services within Alaska and southbound from the state to any point in the Lower 49 and beyond.

## Special Services

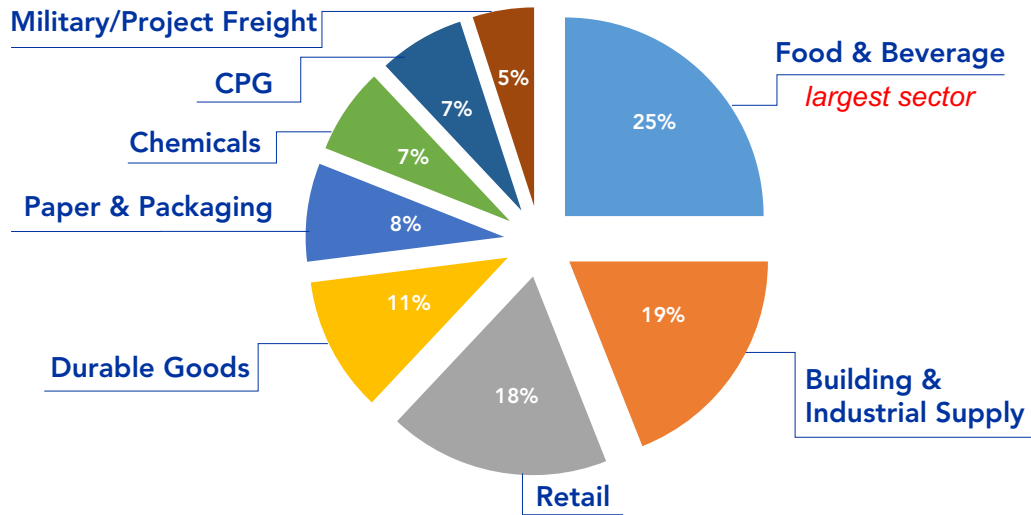
- Destination Direct™ service expedites containers from Tacoma to each Service Center in Alaska ensures minimal cargo rehandling, reduced transit times, and security seal integrity from origin to destination
- Barge services to Central and South Alaska are a cost-effective option for breakbulk, oversize, OOG, and containers of all sizes: 20', 40', 45' and 53'
- Chill and Freeze service for perishable products maintains a consistent cold chain from pickup in the Mainland U.S. to delivery in major metro areas
- Keep from Freezing (KFF) service is available using insulated containers to keep product temperature above the freeze point in winter months. Often used for water-based paints and adhesives, pharmaceuticals, foodstuffs, and alcoholic beverages

[www.spanalaska.com](http://www.spanalaska.com)



# Industries and Customers Served

Matson Logistics' customers are as diverse as the services we provide to them. We have more than 5,000 customer relationships, many of them starting more than 30 years ago. Customers range from small start-ups to premium brands to the largest and most recognizable names in retail and manufacturing.



# Geographic Coverage

The Matson Logistics network spans more than 20 locations throughout North America and Asia, with our footprint growing in Africa and Europe.



**EMEA**  
Ethiopia  
Italy  
Turkey

**Asia and Southeast Asia**  
Cambodia  
China  
Hong Kong  
Indonesia  
South Korea  
Taiwan  
Thailand  
Vietnam

**South Asia**  
Bangladesh  
India  
Pakistan  
Sri Lanka

**North America**  
Canada  
Mexico  
United States