

## DATA SHEET

# S-80 Gate Mechanism

## Remote Monitoring Concept

### Setting New Standards in Railroad Crossing Safety

Siemens launched the innovative S-80 Smart Gate Mechanism in 2023, quickly gaining widespread acceptance from leading US railroads, transit authorities, and international clients. Its advanced digital features, combined with low maintenance costs, have solidified its reputation as a preferred choice among a diverse array of customers.

As the S-80 sets an unparalleled standard of performance, Siemens continues to innovate and elevate expectations with the S-80 Remote Monitoring package. This advanced system utilizes a wireless mesh network to reliably transmit real-time data from each S-80 gate at the crossing to an aggregation hub in the signal housing, where the data is subsequently sent to the cloud for comprehensive analysis. This cutting-edge technology eliminates the need for on-site personnel to understand the health of your crossing gates.

# SIEMENS

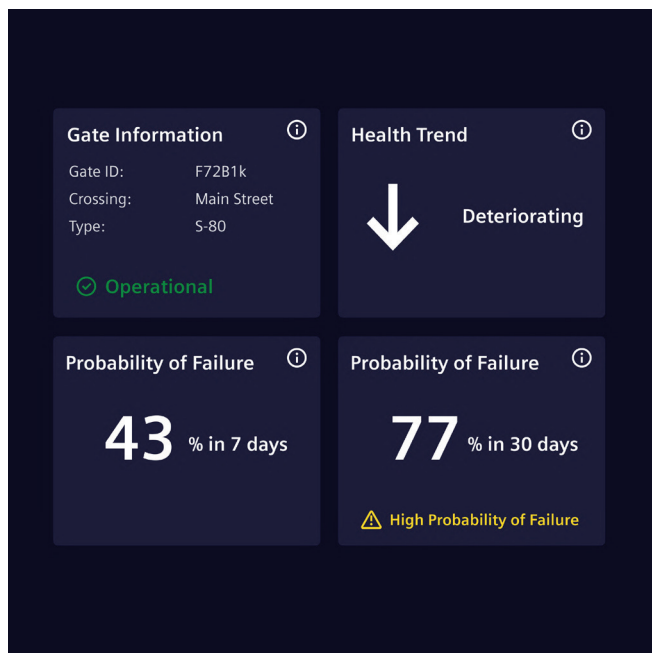
not for publication

## General Features

- *Enhanced Safety*: Detailed alarms for a quicker response to field issues.
- *Reduced Mean Time to Repair (MTTR)*: Step-by-step troubleshooting and testing instructions in the field.
- *Asset Management*: Comprehensive health dashboard of all S-80 gates.
- *Cloud-Based Data Insights*: Access and analyze current and historical data.
- *Data Access*: Tailored mobile app for field and web app for back-office.
- *Predictive Maintenance*: Advanced AI algorithms to warn of hardware degradation.

## General Data

- Communication board and antenna installed in every S-80.
- Compact 4" × 6" data aggregation hub that mounts in the bungalow or case.
- Communication to cloud via existing network infrastructure or cellular modem.



not for publication

## Legal Manufacturer

Siemens Mobility, Inc.  
One Penn Plaza  
11th Floor, Suite 1100  
New York, NY 10119  
United States of America  
Telephone: +1 (800) 793-7233  
usa.siemens.com/mobility

Printed in USA

© 2025, Siemens Mobility, Inc.

Subject to changes and errors. Reference to any specific commercial products, processes, or services, or the use of any trade, firm, or corporation name is for the information and convenience of the public and does not constitute endorsement, recommendation, or favoring by their respective entities. The information given in this document only contains general descriptions and/or performance features. The requested performance features are binding only when they are expressly agreed upon in the concluded contract.

**SIEMENS**